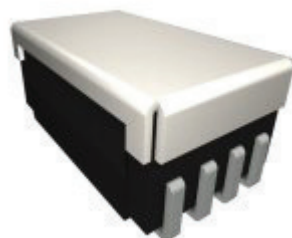


2R Series

Ultra Density Surface Mount



PRODUCT DESCRIPTIONS

The concept of the 2R Series is to maintain both miniature package size and higher frequency capability. This series extended its legitimate bandwidth up to 8GHz. A variety of packaging styles, such as Axial, Gull-Wing, and J-Lead are available.

The 2R Series is suitable for the ATE, telecommunications and wireless markets, which require higher frequency and high density arrangement.

SPECIFICATIONS

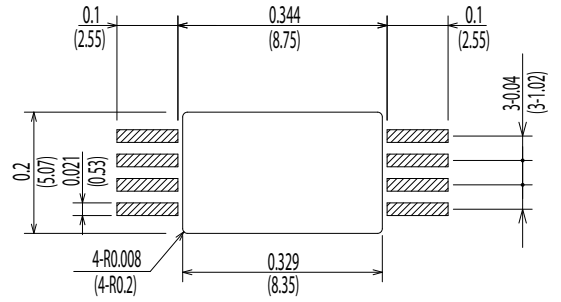
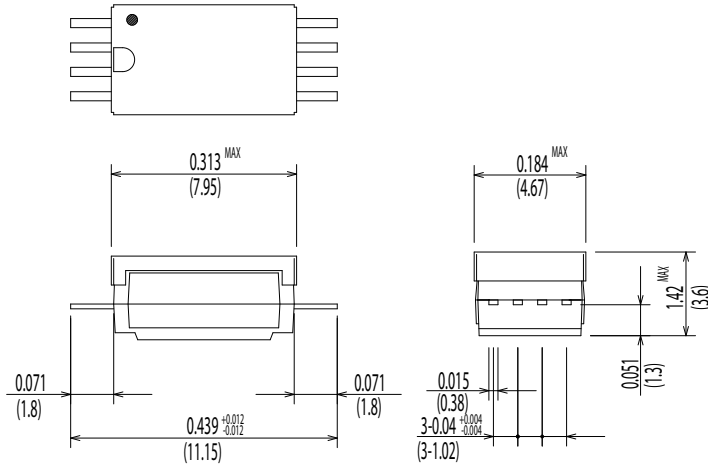


2R Series		2R-54A	2R-14A	
		2R-54G	2R-14G	
		2R-54J	2R-14J	
Parameters	Units	1 Form A		Test Conditions
Coil Specifications				
Nominal Coil Voltage	VDC	3.3	5.0	±10% @ 20°C @ 20°C @ 20°C
Coil Resistance	Ω	90	150	
Operate Voltage	VDC Max	2.8	3.75	
Release Voltage	VDC Min	0.5	0.7	
Contact Ratings				
Switching Voltage	Volts	100		Max DC/Peak AC resistance
Switching Current	Amps	0.2		Max DC/Peak AC resistance
Carry Current	Amps	0.2		Max DC/Peak AC resistance
Contact Rating	Watts	3		Max DC/Peak AC resistance
Life Expectancy	x10 ⁶ Cycle	100		@ 1V 10mA
Contact Resistance	mΩ	150		Max initial @ operate voltage
Contact Resistance Stability	mΩ	5.0		Max initial @ operate voltage
Relay Specifications				
Insulation Resistance	Ω Min	10 ¹²		Between all isolated pins @ 100V 20°C 65%RH
Dielectric Strength	VDC Min	150		Between contacts
	VDC Min	500		Contacts to shield
	VDC Min	500		Contacts/Shield to coil
Operate Time (Including Bounce)	msec Max	0.25		@ nominal coil voltage 100 Hz square wave
Release Time	msec Max	0.05		Diode suppression
Measurement Reference Conditions			Environmental Ratings	
Temp: 15°C to 35°C Humidity: 25% to 75%RH Atmospheric Pressure: 860 to 1060hpa			Storage temp: -40°C to +80°C Operate temp: -20°C to +60°C Vibration: 20G's to 2000Hz Shock: 50G's Processing temp: 260°C max for 60sec. dwell time	

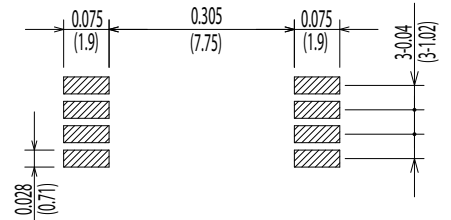
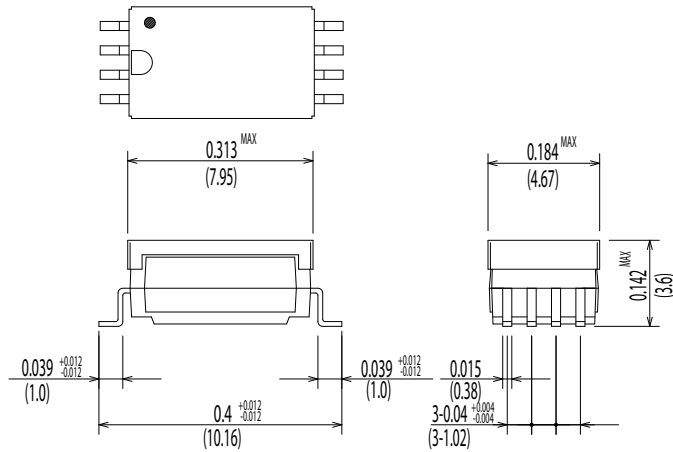
Dimensions All Dimensions are inches (mm)

Land Pattern Recommendation

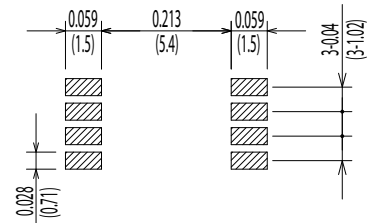
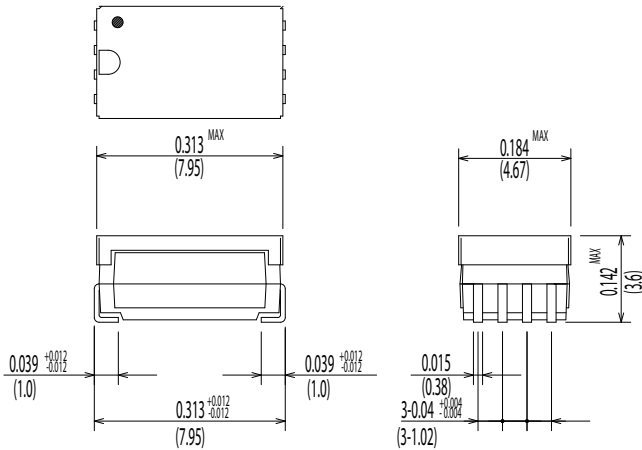
2R-54A/2R-14A



2R-54G/2R-14G



2R-54J/2R-14J



Schematic <Top View>

