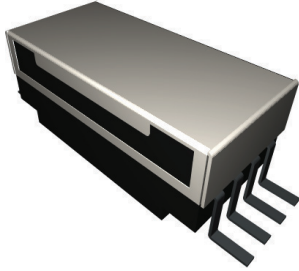


# 1EH Low Profile Series Miniature Surface Mount

## PRODUCT DESCRIPTIONS



Development philosophy with inherited reliability and assembly capacity of the 1EH Series was put into succession of the 1EH Low Profile Series. Gull-Wing and J-Lead achieved low height of 3.6mm. This series is already in mass production for the ATE, telecommunications, and other instrument markets with great acceptance for low height and reliability.

## SPECIFICATIONS

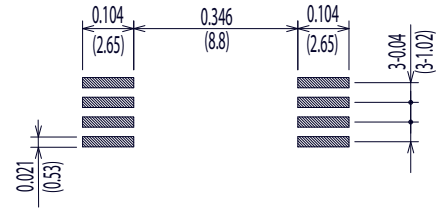
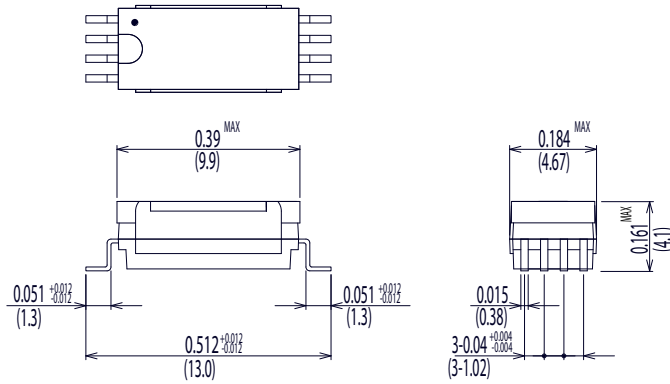


<b>1EH Low Profile</b>		<b>1EH-14G-70</b>	
		<b>1EH-14J-70</b>	
Parameters	Units	1 Form A	Test Conditions
<b>Coil Specifications</b>			
Nominal Coil Voltage	VDC	5.0	
Coil Resistance	$\Omega$	150	$\pm 10\%$ @ 20°C
Operate Voltage	VDC Max	3.75	@ 20°C
Release Voltage	VDC Min	0.7	@ 20°C
<b>Contact Ratings</b>			
Switching Voltage	Volts	100	Max DC/Peak AC resistance
Switching Current	Amps	0.5	Max DC/Peak AC resistance
Carry Current	Amps	1.0	Max DC/Peak AC resistance (@30°C)
Contact Rating	Watts	10	Max DC/Peak AC resistance
Life Expectancy	$\times 10^6$ Cycle	300	@ 1V 10mA
Contact Resistance	m $\Omega$	150	Max initial @ operate voltage
Contact Resistance Stability	m $\Omega$	5.0	Max initial @ operate voltage
<b>Relay Specifications</b>			
Insulation Resistance	$\Omega$ Min	$10^{11}$	Between all isolated pins @ 100V 20°C 65%RH
Dielectric Strength(Static)	VDC Min	200	Between contacts
	VDC Min	250	Contacts to shield
	VDC Min	250	Contacts/Shield to coil
Operate Time (Including Bounce)	msec Max	0.3	@ nominal coil voltage 100 Hz square wave
Release Time	msec Max	0.05	Diode suppression
<b>Measurement Reference Conditions</b>		<b>Environmental Ratings</b>	
Temp: 15°C to 35°C Humidity: 25% to 75%RH Atmospheric Pressure: 860 to 1060hpa		Storage temp: -40°C to +85°C Operate temp: -20°C to +80°C Vibration: 20G's to 2000Hz Shock: 50G's Processing temp: 260°C max for 60sec. dwell time	

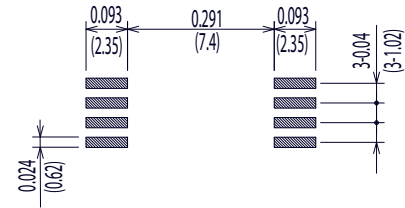
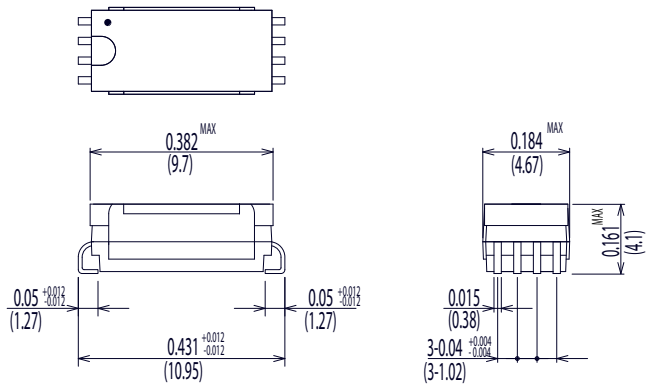
**Dimensions All Dimensions are inches (mm)**

**Land Pattern Recommendation**

**1EH-14G-70**



**1EH-14J-70**



**Schematic <Top View>**

