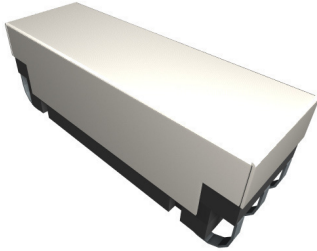


17EH Series

Surface Mount



PRODUCT DESCRIPTIONS

The 17EH Series is one of the Sanyu 30 Watt SMT relays, featuring 50 Ω impedance and high dielectric strength in small form factor. This series has been widely accepted by the ATE, telecommunications, and instrument markets.

SPECIFICATIONS



17EH Series		17EH-1A□2G-01		
		17EH-1A□2J-01		
Parameters	Units	1 Form A		Test Conditions
Coil Specifications				
Nominal Coil Voltage	VDC	5.0	12.0	
Coil Resistance	Ω	200	825	$\pm 10\%$ @ 20°C
Operate Voltage	VDC Max	3.75	8.8	@ 20°C
Release Voltage	VDC Min	0.7	1.2	@ 20°C
Contact Ratings				
Switching Voltage	Volts	200		Max DC/Peak AC resistance
Switching Current	Amps	0.5		Max DC/Peak AC resistance
Carry Current	Amps	1.3		Max DC/Peak AC resistance (@30°C)
Contact Rating	Watts	30		Max DC/Peak AC resistance
Life Expectancy	x10 ⁶ Cycle	1500		@ 1V 10mA
Contact Resistance	m Ω	150		Max initial @ operate voltage
Contact Resistance Stability	m Ω	5.0		Max initial @ operate voltage
Relay Specifications				
Insulation Resistance	Ω Min	10 ¹²		Between all isolated pins @ 100V 20°C 65%RH
Dielectric Strength(Static)	VDC Min	300		Between contacts
	VDC Min	1500		Contacts to shield
	VDC Min	1500		Contacts/Shield to coil
Operate Time (Including Bounce)	msec Max	0.4		@ nominal coil voltage 100 Hz square wave
Release Time	msec Max	0.2		Diode suppression
Measurement Reference Conditions			Environmental Ratings	
Temp: 15°C to 35°C Humidity: 25% to 75%RH Atmospheric Pressure: 860 to 1060hpa			Storage temp: -40°C to +85°C Operate temp: -20°C to +80°C Vibration: 20G's to 2000Hz Shock: 50G's Processing temp: 260°C max for 60sec. dwell time	

Ordering Code:

17EH-1A□2G-01

□=1 (5.0VDC), 2(12.0VDC)

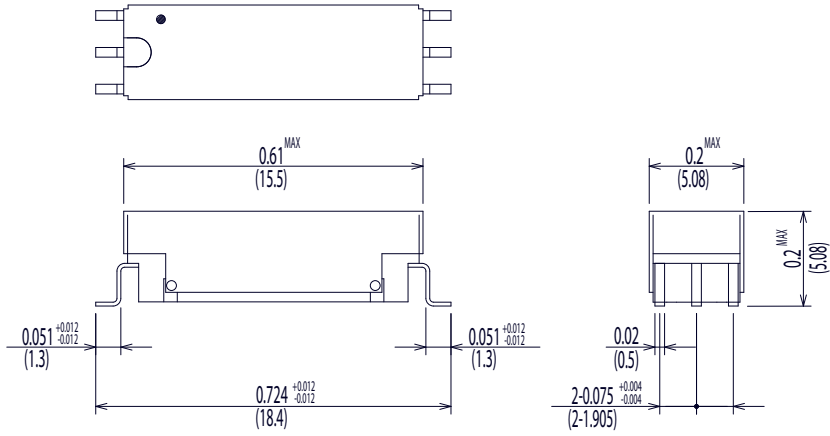
17EH-1A□2J-01

□=1 (5.0VDC), 2(12.0VDC)

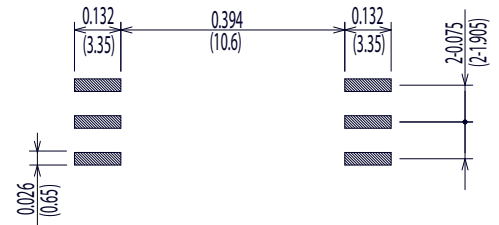
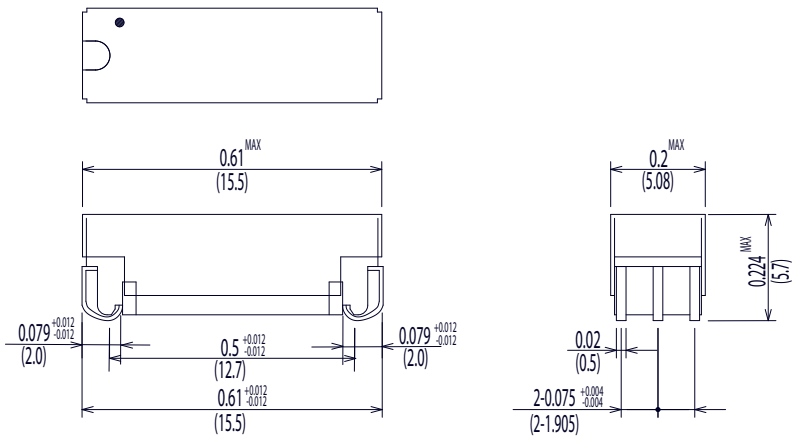
Dimensions All Dimensions are inches (mm)

Land Pattern Recommendation

17EH-1A□2G-01



17EH-1A□2J-01



Schematic <Top View>

