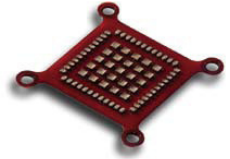
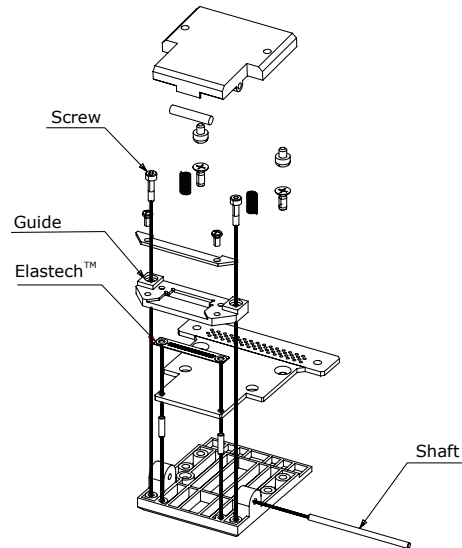
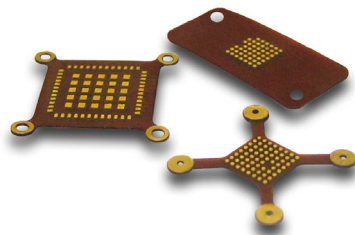


# Elastech™ Interposer system FPC test connector structural drawing



- ◆ Guide will be processed in accordance with each customer's FPC.
- ◆ The guide is removable as needed
- ◆ This product is invertible by attaching the guide in reverse

- \* Low maintenance
- \* Simple replacement, just remove a shaft and guide screws



## Other applications using Elastech™ Interposer

### Device Test Socket for Characterization

- ◆ Unlike regular FPC based interconnects, Elastech™ is a high frequency contactor . Silver particle elastomer is specially adhered to the contact on the PCB side, against FPC (kapton) based interconnect in order to handle larger devices and BGA packages.
- ◆ Contact on the device side is gold plated (nickel / copper). Laser machined aspirates break through the oxide film to provide stability and durability.
- ◆ Silver particle elastomer, which adopted the excessive pressure preventive system, minimizes disturbance resistance caused by excessive particle diffusion.
- ◆ Laser machined bumps on the Elastech™ via holes and contacts make it highly controllable.
- ◆ It is produced in the same production process as FPC that allows laser micro fabrication. Accordingly, it is available down to 0.3 mm pitch minimum.
- ◆ Single product can contain multiple pitches and contact sizes.
- ◆ Contact resistance less than 50mΩ
- ◆ Current capacity: Max.5A/contact
- ◆ High frequency characteristics: -1dB@40GHz
- ◆ Self-inductance: 0.11nH
- ◆ Mutual-inductance: 0.015nH
- ◆ Mutual-capacitance: 0.028pH
- ◆ Typical contact force 15 - 25gf/pin
- ◆ Contact Compliance: Approximately 0.076mm

