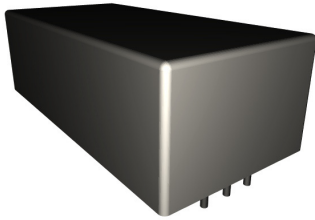


61W Series

PCB Mount



PRODUCT DESCRIPTIONS

The 61W FormC Series is a latching relay consisting of an ultra fast operation mercury switch. This relay was developed to lower power consumption: it uses the power only when it operates, and then holds itself as bi-stable switching. The highly characteristics of this relay are ideal for industrial instrumentation for industrial instrumentations and power plants.

SPECIFICATIONS

61W Form C		61W-1C□1L0			
Parameters	Units	1 Form C			Test Conditions
Coil Specifications					
Nominal Coil Voltage	VDC	5.0	12.0	24.0	±10% @ 20°C 15°C to 35°C 15°C to 35°C
Coil Resistance	Ω	100	500	2000	
Operate Voltage	VDC Max	4.0	9.6	19.2	
Release Voltage	VDC Min	0.8	2.0	4.0	
Contact Ratings					
Switching Voltage	Volts	500			Max DC/Peak AC resistance
Switching Current	Amps	2.0			Max DC/Peak AC resistance
Carry Current	Amps	8.6			Max DC/Peak AC resistance(@30°C)
Contact Rating	Watts	100			Max DC/Peak AC resistance
Life Expectancy	x10 ⁶ Cycle	10000			@ 1V 10mA
Contact Resistance	mΩ	30			Max initial @ operate voltage
Contact Resistance Stability	mΩ	2.0			Max initial @ operate voltage
Relay Specifications					
Insulation Resistance	Ω Min	10 ⁹			Between all isolated pins @ 100V 20°C 40%RH
Dielectric Strength	VDC Min	1000			Between contacts
	VDC Min	1000			Contacts to coil
	VDC Min	1000			Contacts/Shield to coil
Operate Time (No Bounce)	msec Max	2.0			@ nominal coil voltage 10~50Hz square wave
Release Time	msec Max	2.0			Diode suppression
Transfer Time	msec Min	0.05 to 0.7			
Measurement Reference Conditions			Environmental Ratings		
Temp: 15°C to 35°C Humidity: 25% to 75%RH Atmospheric Pressure: 860 to 1060hpa			Storage temp: -30°C to +80°C Operate temp: -20°C to +60°C Vibration: 20G's to 2000Hz Shock: 50G's		

Ordering Code:

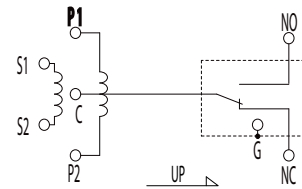
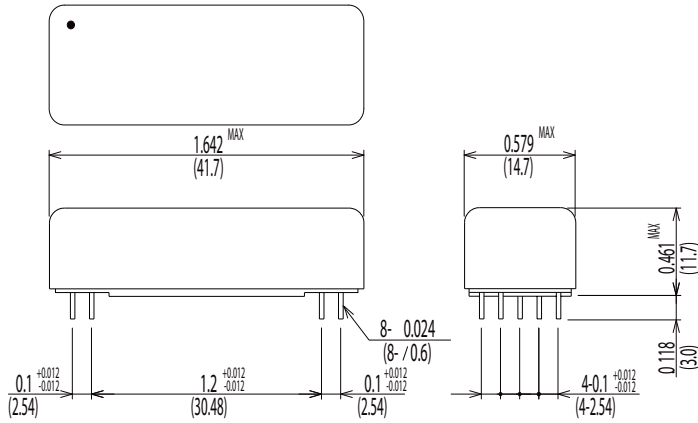
61W-1C□1L0

□=1 (5.0VDC), 2(12.0VDC), 3(24.0VDC)

Dimensions All Dimensions are inches (mm)

Schematic <Top View>

61W-1C□1LO



-Schematic Information-

Contact Operation:

The operating direction of contacts varies according to the coil current, and the contacts remain (are held) at the operating position even if the coil current is turned off after operation.

- Contacts operate to be held to NO at P1 (+) P2 (-).
- Contacts operate to be held to NC at P1 (-) P2 (+).
- Contacts operate to be held to NO at S1 (+) S2 (-).
- Contacts operate to be held to NC at S1 (-) S2 (+).

Note: Hg wet contacts must be mounted within 30° of vertical plane.