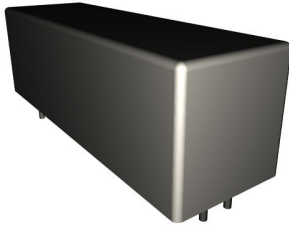


50W Series

PCB Mount



PRODUCT DESCRIPTIONS

The 50W Series consists of a mercury switch, and operates without switch bouncing. This series is suitable for applications requiring high carry current capacity. In addition, the dielectric strength between contacts is rated 1KV as a standard catalog item, and ideal for applications requiring a higher degree of dielectric strength. We also provide a wide range of support to high-load environment.

The configuration shown here is Form A.

SPECIFICATIONS

50W Series		50W-1A□□			50W-2A□□			
Parameters	Units	1 Form A			2 Form A			Test Conditions
Coil Specifications								
Nominal Coil Voltage	VDC	5.0	12.0	24.0	5.0	12.0	24.0	±10% @ 20°C 15°C to 35°C 15°C to 35°C
Coil Resistance	Ω	100	400	1600	80	300	1200	
Operate Voltage	VDC Max	4.0	9.6	19.2	4.0	9.6	19.2	
Release Voltage	VDC Min	0.7	1.2	2.4	0.7	1.2	2.4	
Contact Ratings								
Switching Voltage	Volts	1000(@1mA)						Max DC/Peak AC resistance
Switching Current	Amps	1.0						Max DC/Peak AC resistance
Carry Current	Amps	5.2						Max DC/Peak AC resistance(@30°C)
Contact Rating	Watts	50						Max DC/Peak AC resistance
Life Expectancy	x10 ⁶ Cycle	1000						@ 1V 10mA
Contact Resistance	mΩ	100						Max initial @ operate voltage
Contact Resistance Stability	mΩ	2.0						Max initial @ operate voltage
Relay Specifications								
Insulation Resistance	Ω Min	10 ¹⁰						Between all isolated pins @ 500V 20°C 40%RH
Dielectric Strength	VDC Min	1000						Between contacts
	VDC Min	1000*						Contacts to coil
	VDC Min	1000*						Contacts/Shield to coil
Operate Time (No Bounce)	msec Max	3.0						@ nominal coil voltage
Release Time	msec Max	3.0						50Hz square wave Diode suppression
Measurement Reference Conditions				Environmental Ratings				
Temp: 15°C to 35°C Humidity: 25% to 75%RH Atmospheric Pressure: 860 to 1060hpa				Storage temp: -20°C to +80°C Operate temp: -10°C to +60°C Vibration: 20G's to 2000Hz Shock: 50G's				

Ordering Code:

50W-1A□₁□₂

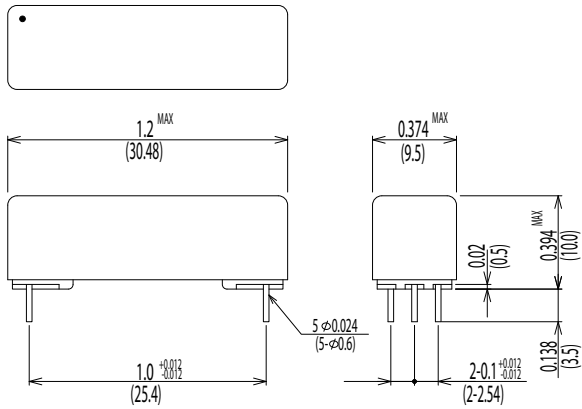
□₁=1 (5.0VDC), 2 (12.0VDC), 3 (24.0VDC)
□₂=1 (Electrostatic) *, N (No shield)

50W-2A□₁□₂

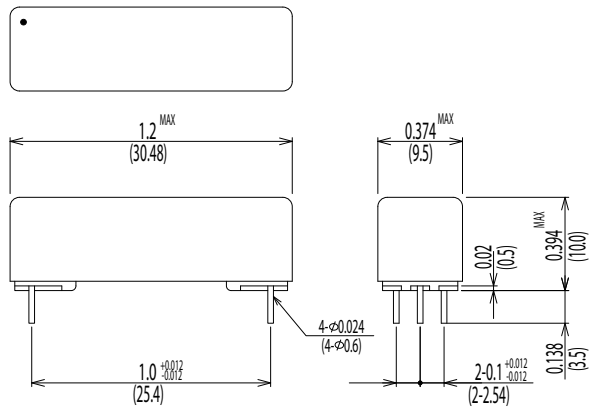
□₁=1 (5.0VDC), 2 (12.0VDC), 3 (24.0VDC)
□₂=1 (Electrostatic) *, N (No shield)

Dimensions All Dimensions are inches (mm)

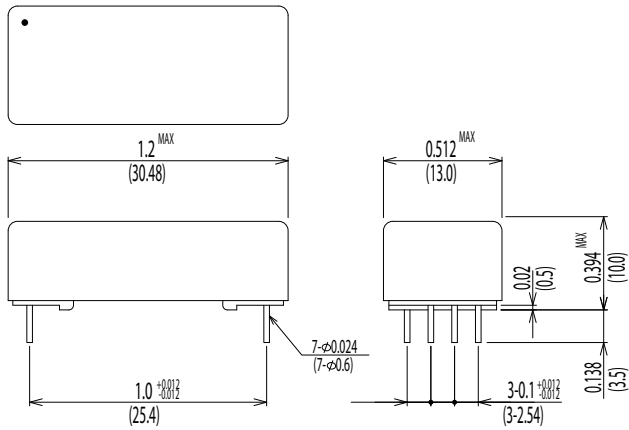
50W-1A□1



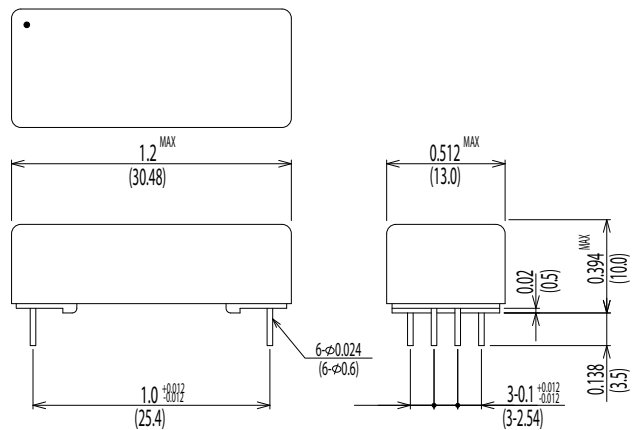
50W-1A□N



50W-2A□1

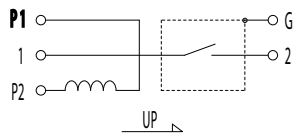


50W-2A□N

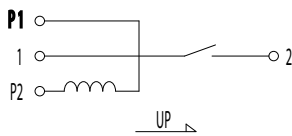


Schematic <Top View>

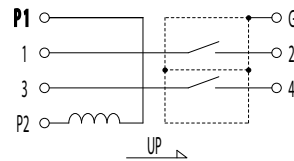
50W-1A□1



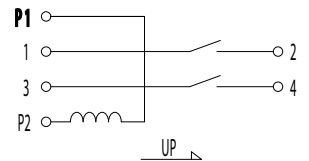
50W-1A□N



50W-2A□1



50W-2A□N



Note: Hg wet contacts must be mounted within 30° of vertical plane.