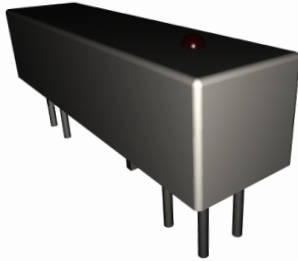


20D Standard 1 Form C PCB Mount



PRODUCT DESCRIPTIONS

The 20D-1C Series comes in Form C configuration, and has been on the market for more than 25 years. This series is available with different electrical performances tuned to your specific requirements.

SPECIFICATIONS



20D Standard 1 Form C		20D-1C□1□2□1			
Parameters	Units	1 Form C			Test Conditions
Coil Specifications					
Nominal Coil Voltage	VDC	5.0	12.0	24.0	±10% @ 20°C @ 20°C @ 20°C
Coil Resistance	Ω	120	600	1800	
Operate Voltage	VDC Max	3.75	8.8	17.6	
Release Voltage	VDC Min	0.7	1.2	2.4	
Contact Ratings					
Switching Voltage	Volts	100			Max DC/Peak AC resistance
Switching Current	Amps	0.2			Max DC/Peak AC resistance
Carry Current	Amps	0.5			Max DC/Peak AC resistance
Contact Rating	Watts	3			Max DC/Peak AC resistance
Life Expectancy	x10 ⁶ Cycle	50			@ 1V 10mA
Contact Resistance	mΩ	150			Max initial @ operate voltage
Contact Resistance Stability	mΩ	5.0			Max initial @ operate voltage
Relay Specifications					
Insulation Resistance	Ω Min	10 ¹¹			Between all isolated pins @ 100V 20°C 65%RH
Dielectric Strength (Static)	VDC Min	200			Between contacts
	VDC Min	500			Contacts to shield
	VDC Min	500			Contacts/Shield to coil
Operate Time (Including Bounce)	msec Max	1.5			@ nominal coil voltage
Release Time	msec Max	2.0			100 Hz square wave Diode suppression
Measurement Reference Conditions			Environmental Ratings		
Temp: 15°C to 35°C Humidity: 25% to 75%RH Atmospheric Pressure: 860 to 1060hpa			Storage temp: -40°C to +85°C Operate temp: -20°C to +80°C Vibration: 20G's to 2000Hz Shock: 50G's		

Ordering Code:

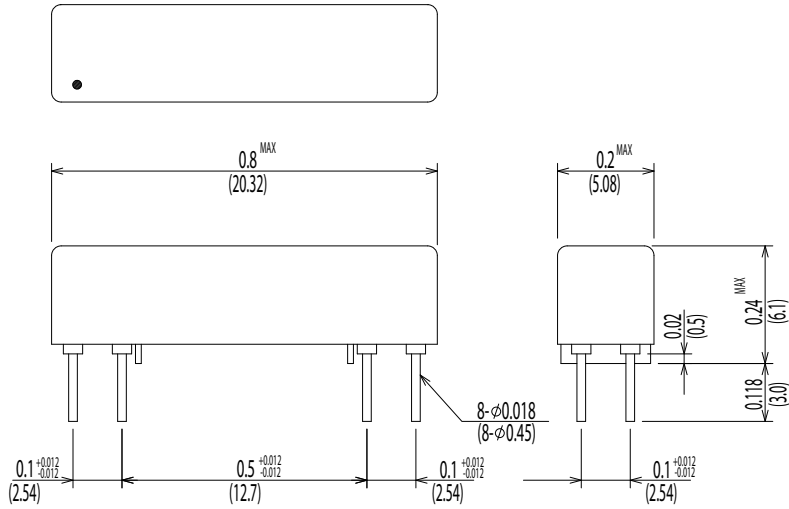
20D-1C □1□2 □2□1

□1)=1 (5.0VDC), 2 (12.0VDC), 3 (24.0VDC)
□2)= D (Diode), E (LED), N (No diode)

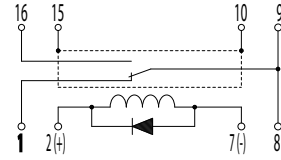
Dimensions All Dimensions are inches (mm)

Schematic <Top View>

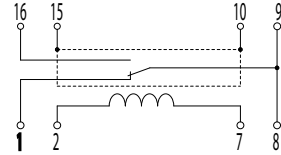
20D-1C□2D1/20D-1C□2N1



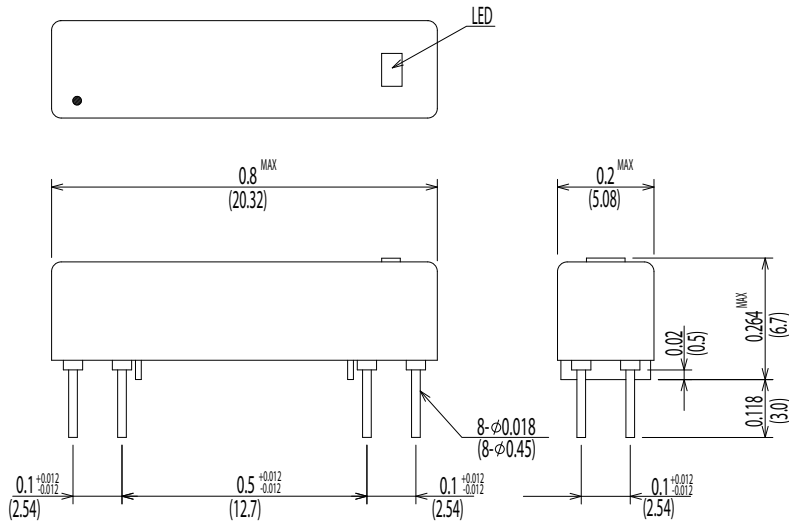
20D-1C□2D1



20D-1C□2N1



20D-1C□2E1



20D-1C□2E1

