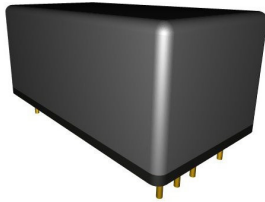


58D Series

PCB Mount / EMF



PRODUCT DESCRIPTIONS

The 58D series is a 3 Form A configuration of dry EMF relay, which achieves 5 μ V or less low thermal EMF. 3 Form A package designs for source measurement unit such as "Force", "Sense" and "Guard". Guard pin is common with Ground. Electrostatic shield improves signal noise ratio.

- Low Thermal EMF: <5 μ V
- Low Power Coils
- Electrostatic Shield as Standard Feature

SPECIFICATIONS



58D Series		58D-3A□1N0-04			
Parameters	Units	3 Form A			Test Conditions
Coil Specifications					
Nominal Coil Voltage	VDC	5.0	12.0	24.0	±10% @ 20°C @ 20°C @ 20°C
Coil Resistance	Ω	350	1500	5000	
Operate Voltage	VDC Max	3.75	8.8	17.6	
Release Voltage	VDC Min	0.7	1.2	2.4	
Contact Ratings					
Switching Voltage	Volts	350			Max DC/Peak AC resistance
Switching Current	Amps	0.5			Max DC/Peak AC resistance
Carry Current	Amps	2.8			Max DC/Peak AC resistance(@ 30°C)
	Amps	2.1			Max DC/Peak AC resistance(@ 80°C)
Contact Rating	Watts	50			Max DC/Peak AC resistance
Life Expectancy	x10 ⁶ Cycle	1000			@ 1V 10mA
Contact Resistance	mΩ	200			Max initial @ operate voltage
Contact Resistance Stability	mΩ	5.0			Max initial @ operate voltage
Relay Specifications					
Insulation Resistance	Ω Min	10 ¹⁰			@ 100V 20°C 65%RH
	Ω Min	10 ¹⁰			Between Contacts
	Ω Min	10 ¹⁰			Contacts to shield
Thermal EMF	μV Max	5.0			Contacts to coil (Except shield to coil)
Dielectric Strength (Static)	VDC Min	400			@ nominal coil voltage
	VDC Min	500			Between Contacts
	VDC Min	500			Contacts to shield
Operate Time (Including Bounce)	msec Max	1.5			Contacts to coil (Except shield to coil)
	msec Max	1.0			@ nominal coil voltage
Release Time	msec Max	1.0			100 Hz square wave Diode suppression
Measurement Reference Conditions			Environmental Ratings		
Temp: 15°C to 35°C Humidity: 25% to 75%RH Atmospheric Pressure: 860 to 1060hpa			Storage temp: -40°C to +85°C Operate temp: -20°C to +80°C Vibration: 20G's to 2000Hz Shock: 50G's		

Ordering Code:

58D-3A□1N0-04

□=1 (5.0VDC), 2(12.0VDC), 3(24.0VDC)

Dimensions All Dimensions are inches (mm)

Schematic <Top View>

58D-3A□1N0-04

